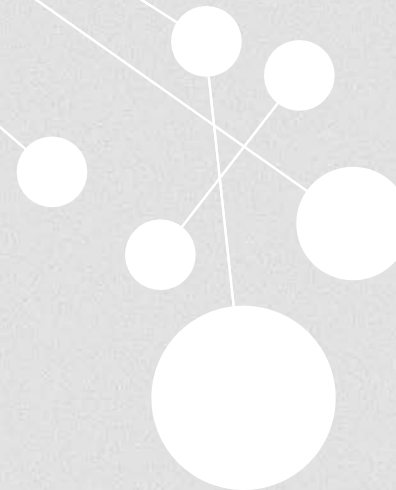
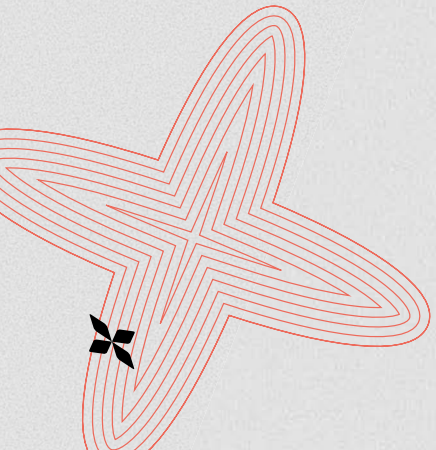


NORDES 2025

RELATIONAL **DESIGN**

11th Nordic Design Research Society (NORDES) Conference
6-8th August 2025, Oslo

Programme



PROGRAMME OVERVIEW

Day 1: Wednesday 6 August

Doctoral Consortium

Venue: OsloMet

Pilestredet 46

Room: PA124

08:30-16:30 Sessions

Conference Opening

Venue: Oslo City Hall:

Rådhusplassen 1, Oslo

19:00-20:30 Speeches & celebrations

DAY 2: Thursday 7 August

Papers, workshops & exhibition

Venue: OsloMet

Pilestredet 46

Room: PA110

09:00-10:00 Plenary: Welcome & Keynote

10:00-10:15 Coffee Break

10:15-11:45 Parallel Paper Sessions

11:45-12:30 Plenary: Making Relations

12:30-13:30 Lunch

13:30-16:30 Parallel Workshops A-F

13:30-16:30 Parallel Paper Sessions

17:00-17:30 Exhibition Opening

19:00-21:00 Conference Dinner

Venue: Oslo Dinner Cruise:

Langkaia (by the Opera House)

DAY 3: Friday 8 August

Papers, workshops & exhibition

Venue: OsloMet

Pilestredet 46

Room: PA110

09:00-12:00 Parallel Workshops G-M

09:00-10:30 Parallel Paper Sessions

10:45-12:00 Parallel Paper Sessions

12:00-13:00 Lunch

13:00-13:30 Plenary: Keynote 2

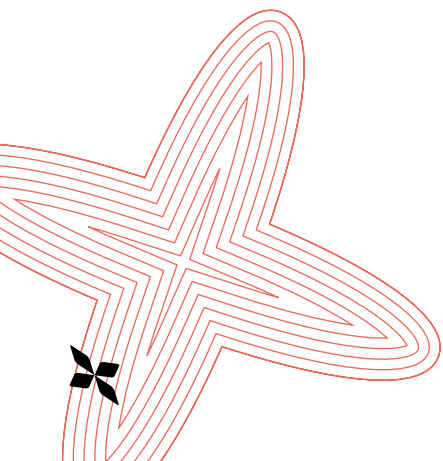
13:30-15:00 Parallel Paper Sessions

15:00-15:15 Coffee Break

15:15-16:00 Parallel Paper Sessions

16:00-17:15 Plenary: NORDES Commons

18:00- Informal Drinks/Dinner
(self-organized)



PROGRAMME Day 1: Wednesday, 6 August

Doctoral Consortium

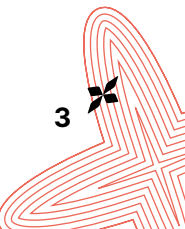
Time: 08:30–16:30 Venue: OsloMet, Pilestredet 46, PA124

Time	Activity
08.30	Check-in, refreshments & mingling
09.00	Welcome & introductions
09.30	Overview presentation of DC & Nordes
09.40	Discussing the research community
09.55	Break
10.15	Exploration of relations in academic communities
11.15	Visualizing your position within a community of relations
12.00	Lunch
13.00	Strategies for making academic contributions in relations
14.00	Break
14.20	Small group discussion of relationality in evolving position papers
16.00	Takeaways
16.30	Closing

Conference Opening

Time: 19:00–20:30 Venue: Oslo City Hall, Rådhusplassen 1, Oslo

Plenary
Welcome from Conference Co-Chairs
Speech by Mayor of Oslo
On Nordes (10 minutes) Dagny Stuedahl
Drinks and snacks
Guided tour of Oslo City Hall



Doctoral Consortium Participants

Elina Määttä	Finland	Closing wardrobes' outflow: A research through design study on the role of redesigned items in clothing domestication
Clara Llamas	Britain	Seeking the Kinship in Service
Petra Jääskeläinen	Sweden	More-than-Human Creative AI: Cultural Imaginaries & Design Politics
Harriet Simms	Scotland	Devolving Governance by Design - Reimagining Participatory Policy and Governance in Scotland
Anna Marie Schröder	Sweden	Designing for ocean-human resonance: exploring the affective dimension in participatory design
Kseniia Obukhova	Belgium	Governing with Commons: Advancing Water Subjectivities in Institutional Settings through Political Design
Cézanne Watthy	Belgium	Benefitting from the outdoors
Leena Naqvi	Sweden	Culturing cultures
Daniele Dell'Orto	Denmark	Visualising for Citizen Participation: Identifying and Addressing Points of Friction in Climate Assemblies
Ayşe Kaplan Sarısaltık	Norway	A systemic approach to sustainable plastic consumption in everyday life practices
Agathe Malbet	Sweden	Navigating incompleteness
Sergio Bravo Josephson	Sweden	Relational design through experimental forms of territorial resistance
Ilma Stankeviciute	Denmark	Facilitating future practices and institutions for just regenerative transitions
Lara Rodgett	Britain	What can we do about it? Little-c "designers" and transitions towards autonomy of regenerative futures
Alexis Ken Sosmena Cartajenas	Norway	Opportunities for a goal-driven & augmented reality-based digital solution to support children and parents in rehabilitation of brain injury: A research position paper
Asli Eylem Kolbas	Belgium	Introducing care ethics in energy transitions with youth: Exploring critical fictions as participatory design approach
Jeanne Sintic	France	PHD Consortium
Claudia Zampella	Spain	Prototyping governance models and policy options in contexts of contestation around water scarcity
Maria Maramotti	Italy	Reframing participatory praxis for a more radical justice design in urban public spaces
Eugenia Rosina	Hungary	Embodied futures: embodiment in participatory futuring processes for just climate transition
Xinquan Wen	Sweden	Position paper for DC
Tessa Laven	Britain	Identifying leverage points and facilitating multi-level design experiments to enable just, ecological transitions

PROGRAMME Day 2: Thursday, 7 August

Conference papers, workshops & exhibition

09:00-10:00	PLENARY Chair: Andrew Morrison Room: PA110		
	Welcome (5 mins)		
	Keynote Session 1 (45 minutes) Some Notes from an Unfaithful Daughter of Design (Research): Li Jönsson Decolonising methodologies: Britt Kramvig Forced Relationships: Jasmin Niess		
	Discussion (10 mins)		
10:00-10:15	Coffee Break		
10:15-11:45	Parallel Paper Session 1 Room: PA110	Parallel Paper Session 2 Room: PA124	Parallel Paper Session 3 Room: PA128
	Positionality Chair: Kristina Lindström	Food Chair: Laura Popplow	More-than-human design Chair: Adeline Hvidsten
	A Relational Design Framework for Designing Feminist Futures in the Finnish Popular Music Sector. (FP) Tomi Rantanen, Tatu Marttila and İdil Gaziulusoy	Co-creating the good life through food-based inquiry. (FP) Danielle Wilde, Leena Naqvi and Mary Karyda	Attending to Right Relations in Design: Lessons from Foraging. (FP) Serina Tarkhanian
	Resisting Rationality and designing for being: in place, in time, and in networks. (EP) Martin Åhlén and Jessica Rohdin	The bread without form: Attuning to relational ways of making through convivial baking practice. (FP) Gianluca Giabardo, Luis Vega and Maarit Mäkelä	Affect in more-than-human design practice: an anecdote-based exploration through dialogue. (EP) Daphné Hamilton-Jones and Anna M. Schröder

10:15-11:45	<p><i>Norm-critical design as a path forward in the relational turn – examples from a norm-critical exploration of the HBSC survey. (EP)</i></p> <p>Anna Isaksson, Karin Ehrnberger, Malin Björklund and Emma Börjesson</p>	<p><i>It splatters! A recipe to codesign the world from our insides, expanding relational practices in participatory design research. (FP)</i></p> <p>Josymar Rodríguez Alfonzo and Liesbeth Huybrechts</p>	<p><i>Becoming Compost. Fostering Soil Care Through Design Practices. (EP)</i></p> <p>Annarita Bianco</p>
	<p><i>The Relational Designer. (EP)</i></p> <p>Michaela Honauer</p>		
11:45-12:30	<p>PLENARY Chair: Laurence Habib Room: PA110</p> <p>Motivation Tanja Storsul, Vice Rector Research OsloMet (5 mins)</p> <p>Dialogue and Making Relations 4 Perspectives and Plenary Participation</p> <p>Perspectives (35 mins): Group 1: <i>If we want new worlds, how do we design with different theories of relation?</i> (Facilitator: Ann Light) Room: PA110 Group 2: <i>Setting boundaries where everything is related</i> (Facilitator: Danielle Wilde) Room: PA124 Group 3: <i>Invisible work, mundane activities and Relational Design</i> (Facilitator: Sanna-Maria Marttila) Room: PA128 Group 4: <i>Decolonising and decentralising design relations</i> (Facilitator: Nicholas B. Torretta) Room: PA329</p> <p>(Discussions to continue over lunch)</p>		
12:30-13:30	<p>Lunch</p>		



13:30-15:00	Parallel Paper Session 4 Room: PA110	Parallel Paper Session 5 Room: PA124	Parallel Paper Session 6 Room: PA128	Parallel Workshop Sessions 1: A-F	
	Methods for ecosocial perspectives Chair: Satu Miettinen	Materiality 1 Chair: Suhas Joshi	Materiality 2 Chair: Maria Göransdotter	Workshop A: Room: PA301	<i>Mattering relational design pedagogies.</i> Teresa Palmieri and Sonia Cabral Matos
	<i>Designing relations all the way down: Hyperlocal eco-social arcs of care and roleplay. (FP)</i> Ann Light and Ruth Catlow	<i>The relationship between maker, machine and material: Creative investigation of geopolymer extrusion 3D printing. (FP)</i> Lennart Engels, Priska Falin, Luis Huaman, Johannes Kaarakainen, Maarit Mäkelä and Jussi Leveinen	<i>Tangible theory as a tool for attuning to biodiversity and non-human voices in private gardens. (FP)</i> Mette Gislev Kjærsgaard, Tau Lenskjold, Mathilde Buskbjerg Madsen, Asbjørn Krüger Mønster and Giocchino Matteo Maniscalco	Workshop B: Room: PA318	<i>In the relational sandbox: Deep democracy and technology.</i> Alma Leora Culén, Nicholas Sebastian Stevens, Jasmin Niess, Sisse Finken, Jason Miklian and Kristian Hoelscher
	<i>Slack lines: Comprehending grace in entangled worlds. (FP)</i> Erik Sandelin	<i>In concert with molten glass: Social and material actors in glassblowing practice. (FP)</i> Sara Hulkkonen, Maarit Mäkelä and Pirita Seitamaa-Hakkarainen	<i>We are all old: Decentralising visions. (FP)</i> Hayley Ho and Elsa Vaara	WORKSHOPS 13:30-16:45 (including breaks)	

13:30-15:00	Linguistic hospitality. Thinking with language to reflect on positionality within more-than-human participatory design. (EP) Weronika Kozak and Liesbeth Huybrechts	Designing with rural mobilities: Attempts at relational design. (EP) Sofie Holst, Morten Krogh Petersen, Mathias Poulsen, Alexandra Lindek and Maximilian Schmidauer	Anyone can put a sofa. (EP) Chenfan Zhang, Valentina Auricchio and Daniela Selloni
	Towards Eco-Social Contracts Through an Entangled Manifestation of Digital Litter. (EP) Seda Özçetin, Ylva Fernaeus, Şeyda Özçetin and Larissa Pschetz	Equine Equipment and Relational Design in Horse-Human Intra-Action. (EP) Synne Skjulstad	
15:00-15:15	Coffee Break		
15:15-16:45	Parallel Paper Session 7 Room: PA110	Parallel Paper Session 8 Room: PA124	Parallel Paper Session 9 Room: PA128
	Participatory design Chair: Laurence Habib	Innovation and services Chair: Tuuli Mattelmäki	Innovation and services Chair: Mari Suoheimo
	Designing for relay-tional co-becoming. (FP) Alexandra Harder Lindek and Mathias Poulsen	Relational design in healthcare innovation: Exploring a multi-site context. (EP) Kathrina Dankl, Laura Aguado-González, Victoria Artigas, Canan Akoglu, Kasper Frank, Marie Kremer, Erika Renedo-Illarregi, Carlos Romero, Yeray Sañudo and Jorge Sierra-Pérez	Expanding environmental discourse through practice-led research: From an experimental pavilion to mainstream architecture. (FP) Maiju Suomi and Sofie Pelsmakers
WORKSHOPS 13:30-16:45 (including breaks)			
Workshop C: Room: PA314		Exploring the entanglement of relational design, spatiality and places. Thomas Binder, Jörn Christiansson and Gabriela Quintana Vigiola	
Workshop D: Room: PA311		Design in service of the pluriverse. Clara Llamas and Pablo Calderon Salazar	

8

15:15-16:45	<p><i>Homework: The politics of participatory design in distributed contexts. (FP)</i></p> <p>Alicia Smedberg and Jens Portinson Hylander</p>	<p><i>Toying with relations: Speculative toys for children and sustainability. (EP)</i></p> <p>Karey Helms, Petra Jääskeläinen, Sharon Lindberg, Elin Sporrang, Arjun Menon, Meike Schalk and Airi Lampinen</p>	<p><i>Agonistic design In practice: Introducing agonism to interaction design pedagogy. (FP)</i></p> <p>Robert Collins, Anjuli Tushar Acharya, Tom van Wijland, Hanxiong Zhang, Johan Redström and Marco C Rozendaal</p>	WORKSHOPS 13:30-16:45 (including breaks)	<p>Workshop E: Room: PA347</p> <p>Exploring the “human norm” in design: Integrating more-than-human and norm-critical design approaches.</p> <p>Katerina Cerna, Yi Luo and Britta Teleman</p>
	<p><i>The relational becoming of a participatory design commoner. (FP)</i></p> <p>Sanna Marttila, Frederick van Amstel, Joanna Saad-Sulonen, Andrea Botero, Giacomo Poderi, Maurizio Teli and P.D. Commoner</p>	<p><i>Relational design for remote intergenerational sensorial play experiences. (EP)</i></p> <p>Kristi Kuusk, Azeem Hamid, Zaur Babayev, Paula Veske-Lepp and Nesli Hazal Oktay</p>	<p><i>Designing relational space: Towards adaptive and interactive learning environments. (FP)</i></p> <p>Johannes Pointner and Albert Lang</p>		<p>Workshop F: Room: PA329</p> <p>Relational design for more-than-human narratives.</p> <p>Margaret Rynning, Lene Utigard and Annette Briest Kriszat</p>
16:45-17:00	Coffee Break				



17:00-17:30	Exhibition Opening <i>Chairs: Einar Stoltenberg & Nicholas Stevens</i>	<i>The Conspiracy Capitaliser: A tool for exploring the intersection of AI, politics, and profit.</i> Robert Collins	<i>Entangled in the design of a relational materiality: Beyond smart textiles.</i> Anne Louise Bang, Delia Dumitrescu, Malene Harsaae, Inger Marie Ladekarl, Hanna Landin, Erin Lewis, Mika Latusaari, Alicja Lawrynowicz, Kati Miettunen, Mithila Mohan, Mikael Nyberg, Lena Pedersen, Pedro Silva, Maija Vaara, Jaana Vapaavouri, Linda Worbin, Zahraalsadat Madani and Kristian Rødby
17:00-17:30	<i>Localizing Design Stories: An exhibition.</i> Bianca Kóczán, Philipp Stingl and Michaela Anzer	<i>Backwards Incidentalilty.</i> Sheida Amiri Rigi	<i>Connections: Nourishing technological imagination through interactive material exploration.</i> Heidi Bråthen

PROGRAMME

Day 3: Friday, 8 August

Conference papers, workshops & exhibition

Venue: OsloMet, Pilestredet 46, PA110

09:00-10:30	Parallel Paper Session 10 Room: PA110	Parallel Paper Session 11 Room: PA124	Parallel Paper Session 12 Room: PA128	Parallel Workshop Sessions 2: G-L	
	Speculative approaches Chair: Enrique Encinas	Health and body Chair: Tau Lenksjold	Service Chair: Josina Vink	Workshop G: Room: PA347	Designing for multispecies affordances: A poetics of control. Martin Avila, Nelly Mäekivi and Erik Andersson
	Re-Imagining the Landscape of Future Farming. (FP) Martin Abildgaard Padalak and Tom Jenkins	Activating aesthetics: Explorations for shifting design practices. (FP) Felicia Nilsson, Lise Amy Hansen and Maria Göransdotter	Transforming complex environments: Applying systems-oriented service design in complex built and digital environments. (FP) Sari Kotaniemi, Mari Suoheimo, Satu Miettinen and Birger Sevaldson	Workshop H: Room: PA301	Designing with relationalities: Interweaving human and more-than-human approaches. Barbro Scholz, Michaela Honauer and Claudia Nuñez-Pacheco
	Knitting for a gnome and other spiritual kindnesses: Fabulating our way into relationality. (EP) Otto Rønneest and Maja Riemann			Workshop I: Room: PA318	Design briefs after progress. Li Jönsson, Maria Göransdotter, Åsa Ståhl, Kristina Lindström and Thomas Laurien
	Everywhere, all at once: Speculative layering of multiple temporalities with Augmented Reality. (FP) Alessandro Ianniello and Roy Bendor	Exploring design fieldwork dilemmas in mental healthcare through Foucaultian mechanisms of power. (FP) Eva Liisa Kubinyi and Jeanne Sintic	Intentional action at the margins: Unpacking agency in public service ecosystem design. (FP) Nicole Hussman, Annukka Svanda and Martina Čaić		

WORKSHOPS 09:00-12:00 (break: 10:30-10:45)

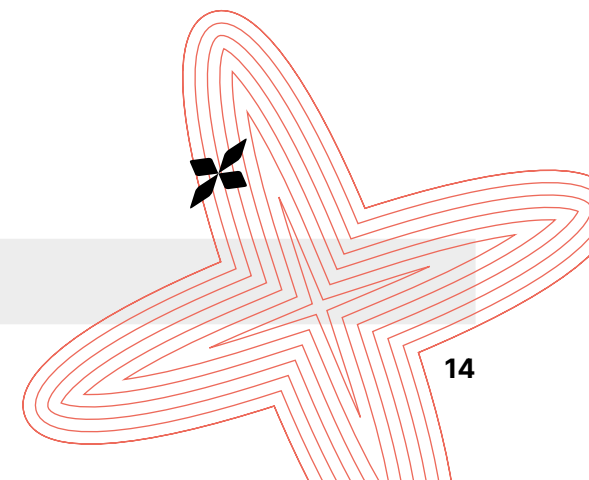
09:00-10:30	Designing speculative probes: Narrating menstruation with cultural sensitivity and care. (EP)	Rethinking self-diagnosis: Bridging doctor and patient perspectives. (FP)	Design for longevity: A relational and systemic perspective. (EP)	WORKSHOPS 09:00-12:00 (break: 10:30-10:45)	Workshop J: Room: PA311	Exploring affective dimensions of the ecological crisis in design: A reflective manifesto writing workshop. Femke Coops, Anna Schröder and Daphne Hamilton-Jones	
	Canan Akoglu, Sofie Kinch and Linda Domke	Melis Dursun Ugras, Guzin Sen and Asli Gunay	Sheng-Hung Lee				A companion map for relational metadesign journeys. (EP) Hannah Jones, Anette Lundebye and Mathilda Tham
10:30-10:45	Coffee Break				Workshop K: Room: PA329	An exploration on relationality and decoloniality in participatory design based on care. Annalinda De Rosa, Milagros Hurtig and Marco Andrea Finardi	
10:45-12:00	Parallel Paper Session 13 Room: PA110	Parallel Paper Session 14 Room: PA124	Parallel Paper Session 15 Room: PA128				
	Storying Chair: Danielle Wilde	Indigeneity and decolonization Chair: Nicholas Torretta	Artistic perspectives Chair: Nic Stevens				
	Participatory storytelling as a relational design practice: The case of the San Vittore prison. (FP) Chiara Ligi and Elettra Panepinto	Reclaiming ‘autonomía(s)’: Governance through design. (FP) Pamela Gil-Salas	Aestheticising material imperfections: Pluriverse waste. (FP) Nikoline Sander and Linda Nhu Laursen				
	Cultural sovereignty and the future of Indigenous digital storytelling. (FP) Amna Qureshi, Jonna Häkkinlä, Pigga Keskitalo and Inker-Anni Linkola-Aikio	Lost in generation: Illustrating Stable Diffusion AI’s colonial bias in representing South African communication design. (FP) Kyle Rath, Fatima Cassim and Adrie Haese	“Poetic engagements with technology”: An alternative design space for embracing vulnerable human nature. (FP) Young Suk Lee			Workshop L: Room: PA314	How to talk of and evaluate relationality in design research and practice? Tuuli Mattelmäki, Ann Light, Andrea Botero, Jaz Hee-Jeong Choi, & Markéta Dolejšová

WORKSHOPS 09:00-12:00 (break: 10:30-10:45)



12:00-13:00	Lunch		
13:00-13:30	PLENARY <i>Chair: Alma Culén</i> <i>Room: PA110</i> Keynote Session 2 (15 minutes) Same Same but Different? A Provocation on (Re-)inventing the Wheel: İdil Gaziulusoy Discussion (15 mins)		
13:30-15:00	Parallel Paper Session 16 <i>Room: PA110</i>	Parallel Paper Session 17 <i>Room: PA124</i>	Parallel Paper Session 18 <i>Room: PA128</i>
	Textiles <i>Chair: Synne Skjulstad</i>	Interaction 1 <i>Chair: Lise Hansen</i>	Interaction 2 <i>Chair: Jasmin Niess</i>
	<i>Healing through collective textile-making: Crafting objects, places, and communities. (FP)</i> Lilyana Yazirlioğlu, Cindy Kohtala and Heather Wiltse	<i>Balancing children's play with plastic-materialistic character toys. (FP)</i> Minjin Kim and Young-ae Hahn	<i>"Poetic Layers": Exploring the aesthetics of bias. (FP)</i> Young Suk Lee and Johan Redström
	<i>Journeying with Kala: Exploring interdependencies of material, land, and maker in shaping textile practices. (FP)</i> Mithila Amy Mohan	<i>Human-to-human interaction design: Choreographing relational practices. (FP)</i> Erica Dorn and Kera Nelson	<i>An adventure with AI: A Relational techno-life design approach. (FP)</i> Yue Zou, Shenhuan Lu and Yile Zhang
	<i>In relation: Brazilian Indigenous fashion design. (FP)</i> Julia Valle-Noronha	<i>Imagining a soft and relational smart home. (FP)</i> Tom Jenkins, Vasiliki Tsaknaki and Stina Hasse Jørgensen	<i>Is it about time? On the meanings of temporal representations in object art. (FP)</i> Patricia Ciobanu and Ylva Fernaeus
15:00-15:15	Coffee Break		

	Parallel Paper Session 19 Room: PA110	Parallel Paper Session 20 Room: PA124	Parallel Paper Session 21 Room: PA128
15:15-16:00	Practice 1 Chair: Angeliki Dimaki-Adolfson	Justice and ethics Chair: Laura Popplow	Practice 2 Chair: Vibeke Sjøvoll
	Developing AI literacy through design education. (FP) Simon Norris, Yi Luo, Andrea Resmini and Dimitrios Gkouskos	Citational justice in design education: Teaching/learning relationality. (EP) Lisa Baumgarten	Shaping space and forming dimensionality through origami practice. (EP) Laureen Mahler
	A designer's ethic: An art in balance. (EP) Akshaya Narayanan, Anna Lathrop and Lucas Vaqueiro	Exploring haunted spaces of participation through justice. (EP) Annunziata Albano, Azeem Hamid and Agathe Malbet	Seasonal design. (EP) Svenja Keune and Åsa Ståhl
16:00-16:15	PLENARY (Conference close) Chair: Andrew Morrison Room: PA110 Keynote Session 3 (10 minutes) Considering design legacies and futures: <i>Camilla Brattland</i>		
16:15-17:15	PLENARY Chair: Thomas Binder Room: PA110 NORDES Commons This is an open meeting for all attendees to learn more about NORDES, discuss and reflect on the conference, plan forthcoming schedules and hostings (Summer School 2026, Next Conference 2027) Attendance is important to contributing to the organisation. Please consider planning your travel to be able to contribute to the community. Agenda to be circulated at the start of the Conference.		
18:00-	Informal Drinks/Dinner (self-organized)		



KEYNOTES

Session 1

Some Notes from an Unfaithful Daughter of Design (Research)

Li Jonssön (Malmö University)

In this short keynote, I will address myths, figures, and the literal possibilities of thinking and doing design in times of socio-ecological crisis. Or, how to move on, when trying to design as part of our planet (not outside of it, not on top of it) to shape re-directive design? As our ecology of practices within design keeps expanding and pushing against and beyond technosolutionist logics, what might be the qualities of design we want to stay with? Because, if the most generic definition of a practice is that it can be destroyed, and (riffing of Stengers) our modern world is a cemetery of destroyed practices. How does design not become a destroyer of its own practices? Harmful modes of designing have been criticized and denounced over the last 70 years for lacking accountability. Nevertheless, current troubling times demand more than critiques of the technosolutionist logics we have inherited. In our search, trying to design as part of our planet, how might such moves avoid being yet another endless pursuit of another “new” direction in design? To re-direct and move on both suggests new directions. How do we embrace relationality, excess, fragility, beyond modern logics, without radical replacements to start over from scratch? How do we move designerly in practices of grounding, landing, and staying with?

Li Jönsson is an Associate Professor at, School of Arts and Communication, Malmö University, Sweden. Her work intersects design, STS and feminist techno-science. She specialises in participatory and speculative methods that explore ways of opening up for more-than-human practices and imaginaries through design. She co-leads (with Kristina Lindström and Åsa Ståhl) the artistic research environment Design after Progress: Reimagining Design Histories and Futures together with research colleagues at four different universities. Funded by the Swedish Research Council. Her recent work from the Grief and Hope project in Transition:

<https://mau.diva-portal.org/smash/get/diva2:1841710/FULLTEXT01.pdf>



KEYNOTES

Session 1

Decolonising methodologies, counter mapping and situated knowledge shaping and sharing

Britt Kramvig (University of Tromsø)

With a career centred on building shared and situated knowing pertaining to Sápmi and the Nordic Arctic in particular, I will argue for further attention to counter-mapping, indigenous methodologies and contextual communication. I see these as central to building respectful and active relations in knowledge shaping and sharing. I will refer to selected examples from a plurality of positions and experiences including cultural collaborations, dynamic partnerships between art and science and in narratives and ethnographic approaches with in a wider environmental humanities. In drawing together such experience, and through attention to positionality, in place and perspective, through this short talk I invite design researchers to further engage in discussion of ways to build and apply pluralist and relational design research discourses.

Britt Kramvig, PhD, is a professor at the School of Business and Economics, The Faculty of Biosciences, Fisheries and Economics (BFE) at the University of Tromsø, Norway. Her research centres around questions of decolonization, innovation within the creative (indigenous) industry, tourism, archive studies and storytelling. Kramvig's work is internationally acknowledged as it embodies a unique dynamic interplay between art and science, fostering collaboration across disciplinary fields within and beyond academia. Kramvig has engaged with the concept of landscape through storytelling throughout her academic career, including her work on Sámi art, land- and soundscape and (de)colonialism, as well as work on the Arctic sea- and soundscape, including collaboration with world-known sound artists and international academic networks in environmental humanities. Kramvig's educational responsibility centres around environmental questions and sustainability, storytelling, ethnography and co-production of knowledge. Kramvig is a member of UiT Indigenous Voices research group and the international research project Surviving the Unthinkable:

<https://survivingtheunthinkable.squarespace.com/>



KEYNOTES

Session 1

Forced Relationships

Jasmin Niess (University of Oslo)

We rarely choose the technologies we live with, but we must live with them nonetheless. From smart speakers that mediate domestic routines to augmentation devices that reconfigure bodies and norms, everyday technologies increasingly act not as tools but as entangled companions. This keynote explores the often asymmetrical, occasionally involuntary and uncomfortable relationships we form with such technologies. These are relationships that may resemble family ties: persistent, affectively charged, and not easily escaped. This keynote positions these entanglements as sites of both constraint and transformation. Technologies do not merely support interaction; they co-construct lived experience, complicate agency, and shape the conditions of participation. Drawing on recent work, I examine how emerging systems evoke ambivalence, attachment, trust, discomfort, and even empathy. These dynamics challenge us to reconsider what it means to design with others, rather than solely for them. Instead of treating design as a means of resolution or optimisation, I argue for a critical and reflexive orientation that embraces paradox, tension, and misalignment as generative forces. Rethinking our relationships with technology as relational, situated, and not always chosen invites us to reimagine design practices that are not only functional but also bearable, accountable, and open to negotiation. This is particularly relevant in times when opting out is no longer a viable option.

Jasmin Niess is an Associate Professor in Human-Computer Interaction (HCI) at the University of Oslo, Norway. Her research explores how interactive technologies such as virtual reality, human augmentation, and tangible artefacts can support well-being and societal good. She combines technical and human-centred approaches, including method development, conceptual work, and prototyping. She focuses on creating inclusive systems that address diverse needs and collaborates across academic, industry, and community sectors to foster inclusion and support positive transformation in the digital domain. Her work reflects a sustained engagement with design, ethics, and the role of technology in everyday life. Jasmin has received multiple best paper awards at leading HCI venues such as ACM CHI and ACM DIS and is part of the University of Oslo's Network of Top Female Researchers. She contributes actively to the international HCI community through academic service and mentoring.



KEYNOTES

Session 2

Same Same but Different? A Provocation on (Re-)inventing the Wheel

Ídíl Gaziulusoy (Aalto University)

While the relational turn in social sciences is recent, the premise of it is arguably not and existed in and constituted the essence of systems theories for about eight decades – or is it? In this short talk, I will first discuss if, to what extent and under which circumstances relationality is a new idea specifically with references to literature on sustainability transformations. Then I will share some thoughts on the potential value and meaning of relational turn for sustainable design research and practice.

Dr. Ídíl Gaziulusoy is Associate Professor of Sustainable Design at the Department of Design, Aalto University, Finland. She is a sustainability scientist and a design researcher, occupying the liminal and evolving intersections between design research and research that focuses on the study and enactment of sustainable, desirable and just futures in a more-than-human world. She is the leader of NODUS Sustainable Design Research Group and Program Director of Aalto University's flagship interdisciplinary master's program Creative Sustainability. She is an editorial board member of *Journal of Design Research*, *She Ji: The Journal of Design, Economics and Innovation*, *Contexts: The Systemic Design Journal* and *Designing*, the new official publication channel of the Design Research Society.

Session 3

Considering design legacies and futures

Camilla Brattland (University of Tromsø)

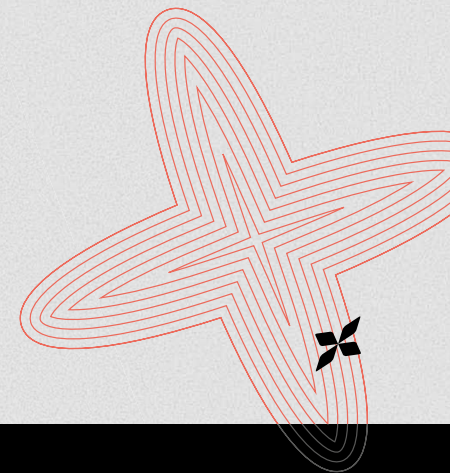
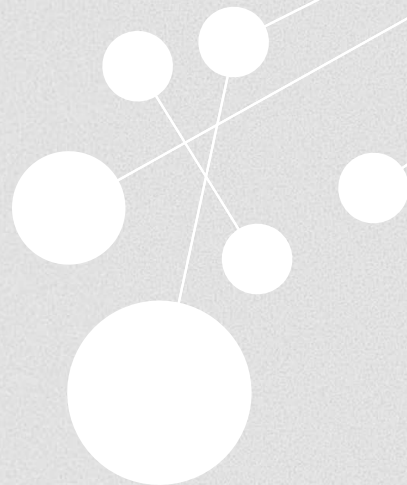
This final Keynote will reflect on matters covered specifically in Day 3 of the event and pose questions, options and critical pathways for the NORDES design research community to consider in our ongoing inquiries through and on shaping and sharing Relational Design.

Camilla Brattland is an Indigenous coastal Sámi from Gáivuotna/Kåfjord in northern Norway and an associate professor in Sámi cultural studies at UiT The Norwegian Arctic University Museum. Her research is centred on Indigenous and Sámi knowledge, participation of Sámi and Indigenous peoples in environmental governance, particularly in blue social-ecological systems. She specializes in documentation of Sámi and Indigenous traditional use of the environment using participatory GIS and StoryMapping.



NORDES 2025

RELATIONAL DESIGN



OSLOMET

OSLO METROPOLITAN UNIVERSITY
STORBYUNIVERSITETET



Arkitektur- og designhøgskolen i Oslo
The Oslo School of Architecture and Design



**UNIVERSITY
OF OSLO**